

A GUIDE TO MCB QUANTICO WATERFOWL HUNTING

Ninth Edition (2024) Revised



Table of Contents

Introduction	3
Jump-Shooting	4
Chopawamsic Creek	5
Chopawamsic Creek Map	5
Blind 1	7
Blind 2	8
Blind 3	8
Blind 4	9
Blind A	9
Blind C	10
Quantico Creek	12
Quantico Creek Map	12
Blind 5	13
Blind 6	13
Blind 7	14
Blind 8	14
Blind E	14
Blind F	14
Blind Hospital Point	15
Potomac River	16
Potomac River Map	16
Blind D	17
Blind 9	18
Blind 10	18
MCAF Shoreline Restricted Area Map	20
Smith Lake	21
Smith Lake Map	21
Blind 16	21
Blind 17	22
Dalton Pond	22
Dalton Pond Map	22

INTRODUCTION

This guide provides information about and directions to waterfowl blinds located aboard Marine Corps Base (MCB) Quantico. It also provides locations of the different boat launch points, information about the different waterways, and restrictions and safety concerns associated with the hunting areas. This guide is not an all-encompassing document but is a tool to assist you in getting safely to your hunting area. This document **does not** supersede MCB hunting regulations.

For this guide, the waterfowl blinds will be associated with the water feature where they are located. All directions will use the Game Check Station as the start point. The section on each blind in this packet gives a distance from the boat launch. This distance is always given in meters and is always a straight-line distance. Maps have been included in the text where appropriate. Each section will provide a description of the water feature, directions to boat launch points, and navigation tips to each of the blinds.

Upon reaching the blind, please make sure you have navigated to the location for which you have a reservation or check-in through iSportsman. The interior of each blind has a placard marked with that blind's designation. While every effort is made to ensure that such placards are present, they may be missing due to weather, vandalism, or other factors. It is therefore recommended that you are familiar with the blind before you hunt from it. Likewise, you may want to utilize the grid coordinates provided in this package and a GPS unit to assist in navigation.

The grid locations given in this guide are in the UTM World Geodetic System (WGS) 84, North American Datum (NAD) 83 to 27. If you are using a military 1:50K or 1:25K, make note of the version of the datum displayed on the map to make sure it is in WGS 84. You can use these coordinates and enter into your Global Positioning System (GPS). When using a GPS, make sure your coordinate system is set to display the WGS 84 Datum. The grids are listed to 8 digits (or 10 meters) of accuracy. The grid zone designations of all grids listed are 18S.

This edition is an update that covers the current blind status. Keep in mind that weather and time of year may affect the state of waterways and conditions of the blinds and surrounding terrain. Hunters are reminded not to remove/alter blind or brushing without approval from game check station. Any repairs/modifications/suggestions should be communicated to the Game Check Station personnel. Any input or corrections to this guide can be given to the game check personnel during normal business hours at the Game Check Station.

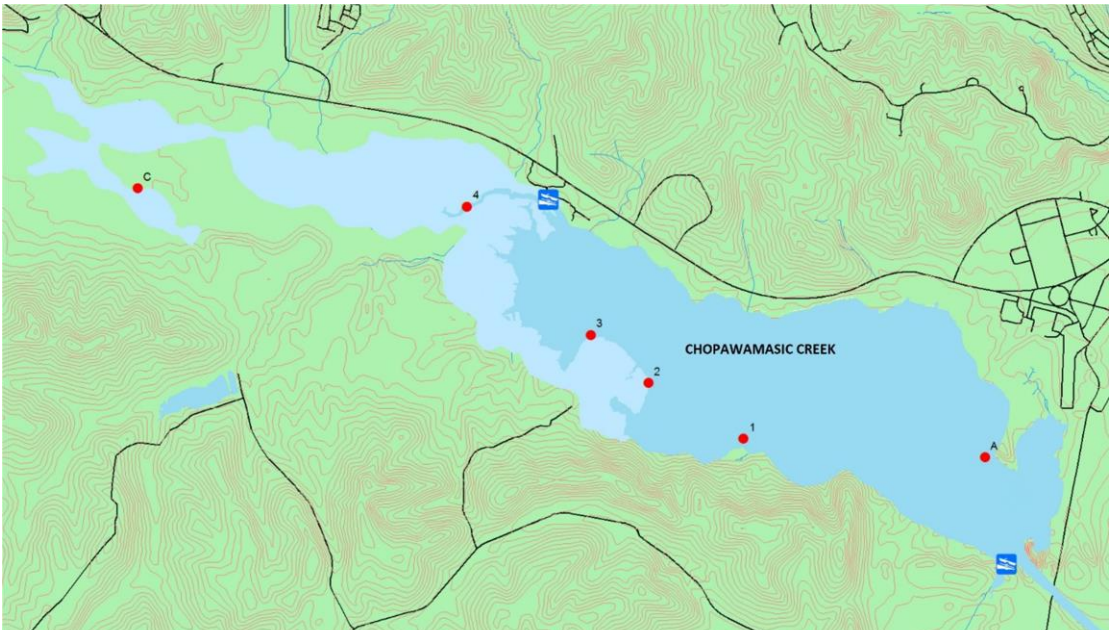
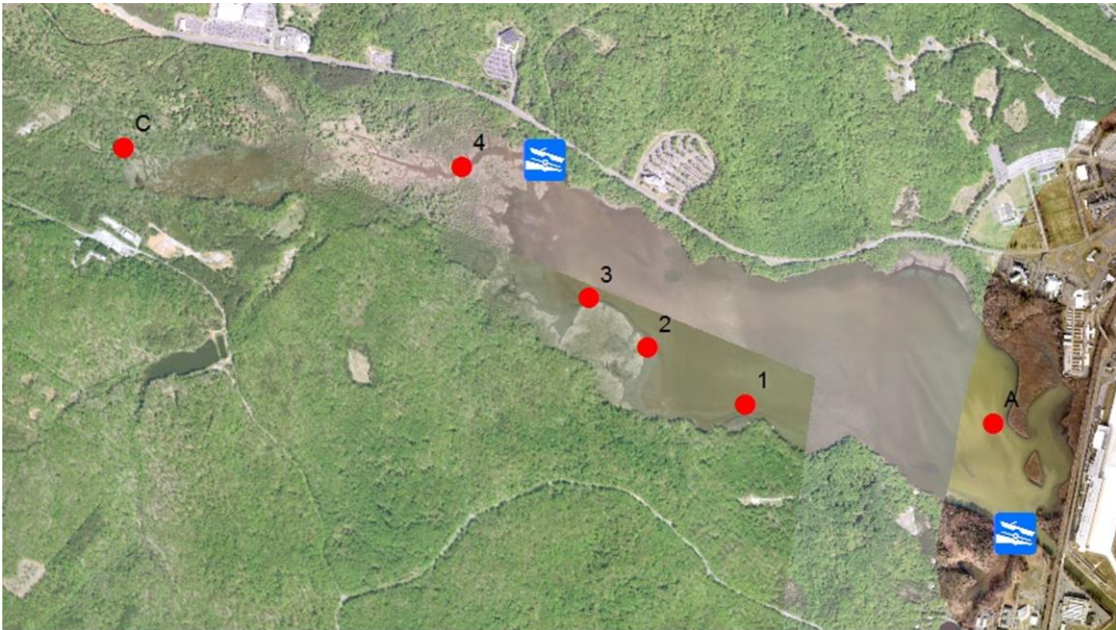
Waterfowl Blind 100-ft Rule Per MCINCR-MCBQO 11015.2D, at certain stationary blinds, the hunting party can hunt from a position within a 100-foot radius of the blind or at the staked position (if the blind has one) to adjust for prevailing wind conditions." The 100 foot rule applies to blinds 1, 2, 3, 4, 5, 6, 7, 8 and E. All members of the hunting party must hunt from the same position. If in a boat blind, it must have a current Virginia Floating Blind license.

JUMP-SHOOTING

Jump-shooting within the Training Areas is authorized. Numerous Training Areas throughout the base have streams, beaver ponds, and creek beds that waterfowl utilize. Jump-shooting during deer firearm season does not require blaze color in the woods. Jump-shooting is not authorized in any of the Archery only Areas, 10B, 10C nor 6B.

CHOPAWAMASIC CREEK

Chopawamsic Creek is located East of I-95 on the Mainside portion of MCB Quantico. There are six stationary blinds (Blinds A, 1, 2, 3, 4, and C). The creek is located on the south side of Russell Road and runs parallel to it. Chopawamsic Creek is a shallow body of water only several feet in depth at its deepest point during high tide. The creek has a small stream feeding it from the west and empties directly into the Potomac River in the east. The creek bottom has a heavy buildup of silt and is extremely soft.



Guide to MCB Quantico Waterfowl Hunting (2024)

There are two boat ramps located on the creek, one on the western end and the other on the eastern end. The first ramp is a small, unimproved, shallow ramp located on the western tip of the creek and can be accessed from the wildlife viewing area off Russell Road. This is a shallow ramp made of gravel. It is best suited for canoes, kayaks, and lighter boats with electric motors. The parking area is limited, and it is difficult to maneuver a car and trailer around the ramp. The second ramp is a deep cement ramp located on the eastern portion of the creek and can be accessed from behind Officer Candidate School (OCS). This ramp is lighted and easily accommodates larger boats with its deep draft and solid construction. The ramp is steep and when wet or covered with ice can be difficult to drive off. Use caution during winter months to avoid sliding while backing down or driving up the ramp.

Chopawamsic Creek is subject to tidal changes with significant depth changes from low to high tide, especially during heavy west or northwest winds. The current at the OCS boat ramp can also be strong on a wind aided rising or falling tide making it difficult to launch or recover watercraft. During periods of low tide, the Chopawamsic may become un-navigable to boats with motors. Because of the silt build up and the extremely soft bottom, getting out of your boat and pushing may be dangerous. It is highly recommended that you know the tide schedule for the day of your hunt, so you are aware of the conditions moving to and from the blinds.

Chopawamsic Creek has a large amount of aquatic vegetation during the summer and into the fall. This can cause problems getting to the blinds. The channel heading west up the creek is along the southern bank of the creek. Make note of the tidal marsh in the center of the creek that bounds the channel on the north. It is visible during low tide. The two blinds most affected are Blinds 2 and 3 located towards the western end of the creek. The extreme western end of the creek is a marsh with a small stream flowing through it. The stream that flows through this area can be shallow but has some deep holes. Navigating a large boat through this area is extremely difficult. Blind 4 is in this area of the creek. During the summer and fall you can also expect to find aquatic vegetation growing in this area. Blind C is at the extreme western portion of the creek and is not accessible from the main creek body. Access is granted by foot via a designated parking area at the Transportation & Demonstration Support Area (TDSA).

MCAF Shoreline Restricted Area Map. This restricted area prohibits entering the Chopawamsic Creek from the Potomac River or exiting the Chopawamsic Creek to the Potomac River. (See P-20 below for the Restricted Area Map.) This area is marked with buoys. These buoys are subject to weather conditions and at times may be displaced.

Directions to the Officer Candidate School (OCS) Boat Ramp: From the Game Check Station you will head east on Russell Rd towards I-95. You will pass under I-95 bridge and continue heading toward the back gate of MCB Quantico. Please note that this gate is not manned 24 hours a day. Consult the current gate schedule if you are planning a very early arrival. After driving through the gate continue heading east on Russell Road. You will pass the Marine Corps Exchange/Commissary on your left side. As you continue down Russell Road and pass the Base Chapel, you will come to a traffic circle. You want to stay to the right as you approach the circle. You do not want to turn into the circle. Just past the circle the road comes to a T-intersection at a stop sign. At the intersection turn right onto Range Rd. and head over the bridge. You will pass the airfield on your left. At the top of the small rise there will be a

Guide to MCB Quantico Waterfowl Hunting (2024)

railroad crossing on your right side. You will cross over the train tracks into Officer Candidate School. You will turn right at the first road. Follow that road to a parking lot. Go straight through the parking lot and look for a gravel road in the back of the parking lot. Follow that road to the bottom of the hill and the ramp will be on your right-hand side. Any iSportsman user accessing OCS must first check-in with the Officer-On-Duty (OOD) at the front admin office.

Directions to the Wildlife Viewing Area Boat Ramp: From the Game Check Station you will head east on Russell Road towards I-95. You will pass under the I-95 bridge and continue heading towards the back gate of MCB Quantico. After driving through the gate continue heading east on Russell Road. You will pass the Marine Corps Exchange/Commissary on your left. As you continue on Russell Road, you will pass the MCCDC headquarters building. There will be a traffic light directly in front of the building. Just past the traffic light on your right there will be a gravel road and a brown sign indicating the entrance to the Wildlife Viewing Area. Turn down this road, and follow it to the boat ramp on your right hand side. The road is a one-way road, so make sure you enter and exit correctly.

Blind 1: Blind 1 is located on the south bank of the creek approximately 1220 meters west from the OCS boat ramp and approximately 1380 meters SE from the Wildlife Viewing Area boat ramp. The blind is located on a small point of land with large coves on both sides. The grid coordinates are 18S 297306, 4264378. The blind has a hill directly behind it. It sits out about four feet from the hill in fairly shallow water. At high tide the water is roughly three feet deep. The footing directly around the blind is very solid. The blind can be seen from the Wildlife Viewing Area observation deck. Rebuilt blind as of 2024.

From the OCS Ramp: From the ramp you will turn west (left) and head up the creek. You should follow the southern shoreline and look for a few distinct features. The shoreline is generally straight with no major changes in appearance. Approximately 850 meters up, the coastline will bend and create a cove. If you look to the western end of the cove you will see a point of land that sticks out. This is the location of the blind. During low tides it can be very difficult to navigate up the creek. Stay between the southern shoreline and the tidal flat north of the channel. If you lose the tide, be prepared for a long, difficult trip. Make sure you check the tides and allow sufficient time to get to and from the blind, especially in the dark. The OCS ramp is the closest start point for getting to Blind 1.

From the Wildlife Viewing Area Ramp: When you leave the ramp turn east (left). A short way out from the ramp the creek will open up into open water. As you head east you will notice a large marshy area on the right. Continue past this area and look for a cove on the eastern side of the marsh. You will then notice a point of land sticking out. This is the location of the blind. If you pass the marsh and start noticing a solid, wooded bank you have gone too far.

Consider the tidal flow when determining your launch point if you are paddling or using a trolling motor. Even though the OCS launch is about 200 yards closer, this will be negated going against an outgoing tide.

Blind 1 Alternate Blind Stake: Blind 1 has an alternate blind stake located to the east (to the right as you look out from the blind). From 15 December to 15 July, Bald Eagles are known to nest above blind 1. During this time, Blind 1 Alternative blind stake is the

Guide to MCB Quantico Waterfowl Hunting (2024)

only place allowed to be hunted. Head east from the blind toward the point of land. There is currently a stake that is marked with reflective tape. As with all alternate stakes, a flashlight will help you find the stake in the dark. Stakes are 4x4's with reflective tape affixed to the top.

Blind 2: Blind 2 is located toward the western portion of the creek on a large marshy point of land. It is located approximately 1800 meters west from the OCS ramp and approximately 890 meters SE from the Wildlife Viewing Area ramp. Blind 2 is on the edge of the marsh grass at grid coordinates 18S 296829, 4264695. The footing around the blind is soft and uneven. Exercise caution when moving around in the water in front of the blind. The water depth in front of the blind is about three to four feet at high tide. The blind can be seen from the Wildlife Viewing Area observation deck. Rebuilt blind as of 2024.

From the OCS Ramp: Head west (left) from the ramp up the creek. As you follow the southern shoreline you will notice that the shoreline is fairly straight. Approximately 1000 meters up the creek you will notice a cove and then a point of land. Beyond the point of land you will see another cove and a large marshy area. As you approach the second cove, look toward the eastern side of the marshy area. This is where the blind is located. Staying in the channel will help you avoid some of the tidal flats. The creek is very shallow west of Blind 1 and navigation may be difficult at low tide. Make sure you check the tides and allow sufficient time to get to and from the blind, especially in the dark and if the wind is blowing from the northwest.

From the Wildlife Viewing Area Ramp: When you leave the ramp turn toward the east (left). A short way out from the ramp the creek will open up into open water. As you head east you will notice on the southern side (right side) a large marshy area that sticks out into the creek. The marshy area has a cove on both the east and west sides. Head toward the eastern (far) side of the point. The blind is located on the eastern side of the marshy area near the top of the cove.

Blind 2 Alternate Shooting Stake: From the blind head south (as you look out from the blind, to the right) toward the wood line. Approximately 100 meters south you will find the alternate shooting stake (approximately 15 meters out from the shoreline) marked with reflective tape. The footing at the stake is somewhat better than the area around the blind but still soft and crisscrossed with muskrat and beaver channels.

Blind 3: Blind 3 is located toward the western portion of the creek on a large marshy point of land. It is located approximately 2000 meters west from the OCS ramp and approximately 640 meters SE from the Wildlife Viewing Area ramp. Blind 3 is on the edge of the marsh grass at grid coordinates 18S 296635, 4264899. The footing around the blind is good but gets soft and uneven farther away. Exercise caution when moving around in the water to the right and left of the blind as there are beaver and muskrat channels that have sharp drop offs. There is also a beaver lodge to the left rear of the blind that has a channel back to it and beyond that is a good place to hide a small boat. Rebuilt blind as of 2024.

From the OCS Ramp: Head west (left) from the ramp up the creek. As you follow the southern shoreline you will notice that the shoreline is fairly straight. Approximately 1000 meters up the

Guide to MCB Quantico Waterfowl Hunting (2024)

creek you will notice a cove and then a point of land. Beyond the point of land you will see another cove and a large marshy area. Go past the second cove and Blind 2 and around the marshy portion of land that sticks out. As you pass around the marshy point the land starts to wrap around and form another cove on the west side. The blind is located where the point starts to bend back into the cove. If you lose the tide, be prepared for a long difficult trip. Make sure you check the tides and allow sufficient time to get to and from the blind; especially in the dark or if the wind is blowing from the northwest.

From the Wildlife Viewing Area Ramp: When you leave the ramp turn toward the east (left). A short way out from the ramp the creek will open up into open water. As you head east you will notice on the southern side (right side) a large marshy area that sticks out into the creek. Continue toward the western edge of that marshy area. The blind is located on the western edge of the marshy area near the top of the cove. The blind can be seen from the Wildlife Viewing Area observation deck.

Blind 3 Alternate Shooting Stake: From the blind head out towards the west (as you look out of the blind, to the left) and follow the curve around to the south. About 100 meters you will find the alternate shooting stake approximately 10 meters from the shoreline.

Blind 4: Blind 4 is the western most blind located on the creek and is not located on the main body of water. It is located approximately 500 meters from the Wildlife Viewing Area ramp at grid coordinates 18S 296988, 4265485. Blind 4 has a dog ramp but no door. The small creek that leads into the blind is very shallow. Any boats with a draft of more than 1 foot will have difficulty getting into the blind. The area around the blind is thick marsh with tall marsh grass and small trees behind. The blind sits on the northern side of the creek and is oriented SSW. The footing around the blind is very soft and there are numerous obstructions both above and below the water line. The small creek that runs past the blind widens out in front of the blind to about 30-40 meters. The far side is moderately wooded. Retrieving downed birds can be a challenge if they fall on land. Caution is recommended when walking outside of the blind. Rebuilt blind as of 2024.

From the Wildlife Viewing Area Ramp: Turn west (right) when leaving the boat ramp and follow the creek through the marsh. The creek runs basically straight for about 200 meters and then you will make a left turn. After you make the turn there is an old Blind 4 site about 150 meters up on the left side. Go past this about 80 meters and the blind will be on your right.

Blind 4 Alternate Shooting Stake: Blind 4 has no alternate shooting stake.

Blind A: This is the closest blind to the OCS ramp at grid 18S 298310, 4264331. The blind is located along the marshy area at the eastern end of the Creek. The blind is deliberately designed to limit shooting west to its direct front since the air facility and occupied buildings are to its

Guide to MCB Quantico Waterfowl Hunting (2024)

rear. Shooting east of the blind is prohibited. There are some underwater obstructions around the front of the blind and the surrounding ground is very soft. Rebuilt blind as of 2024.

From the OCS boat ramp: Head NNW for about 475 meters. The blind will be on the second marshy island past the OCS ramp just past the entrance to a small body of water behind the blind. It is clearly visible from the ramp. Since this blind is in Prince William County, swans may not be shot from it even if the hunter possesses a swan tag.

Blind A Alternate Shooting Stake: Blind A has no alternate shooting stake.

Blind C: Blind C is a **stake** located in a section of flooded marsh and forest land along the Chopawamsic Creek near the Transportation Demonstration Support Area (TDSA). It is accessible by land only. Hunters must park outside the TDSA gate and walk to the blind. The TDSA gate is located at the end of George Mason Road which intersects Route 1 just north of Telegraph Road. **Hunters are not to block the gate regardless of the open/closed status of the gate, and they are not to drive through the gate.** There is a small sign marking the proper parking area when hunting Blind C.

There is a foot path that parallels the gate fence to the north. Follow that for about 15 meters to the end of the fence and find the road just past the end of the fence. Along the wood line is an old road that is no longer in use. Follow this road through the woods until it dead ends (about 300 meters) at a very narrow section of the Chopawamsic Creek. There is an old telephone pole at the end of the road. Turn right and follow the creek for about 300 meters until you come to an open marsh area. In the middle of the opening is an old beaver pond with a hen house nesting platform. There is **no actual blind to hunt from**. Instead, there are four trees surrounding the pond that are marked with reflective tape. Hunters may hunt within a 100 feet of any of these trees. Grid coordinates for the Blind C Stake are 18S 294682, 4265610. The creek can be several feet deep in places, and the footing is generally firm with soft spots on the beaver pond if it has water. It is a pretty good hike in the dark so plan accordingly. It is recommended to talk through your plan with someone who has hunted there before.

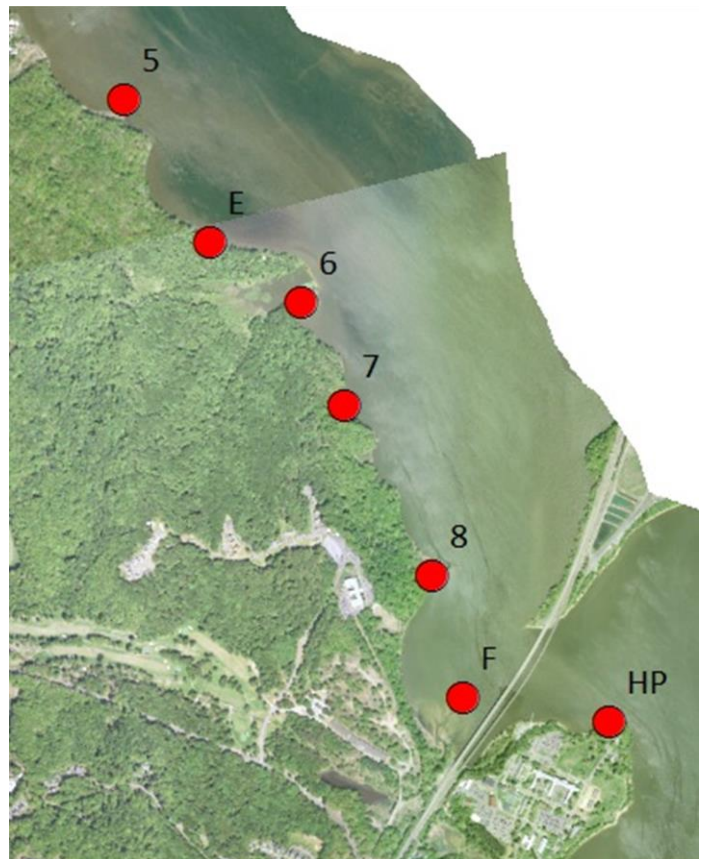
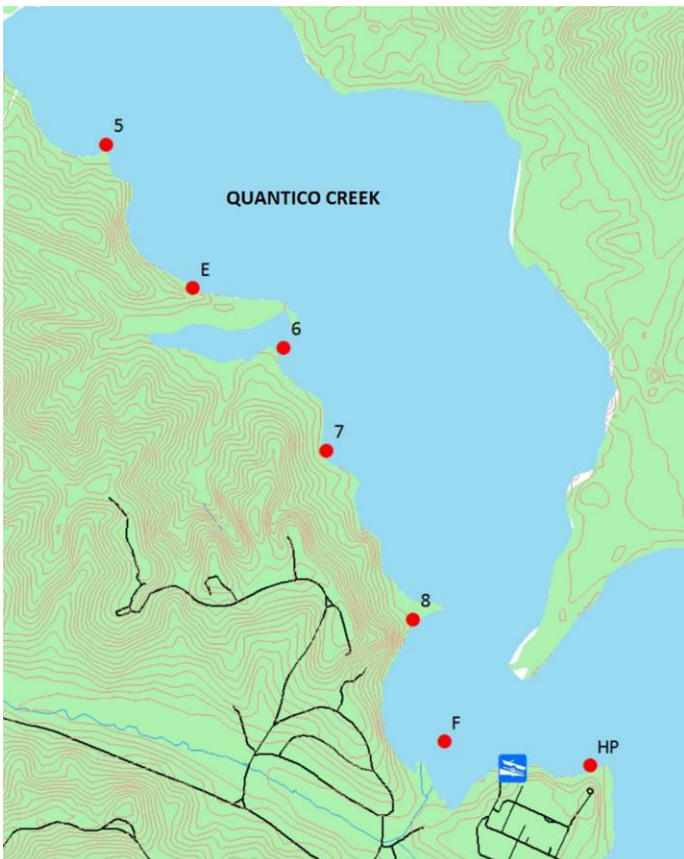
UPDATE: The huntable portion of Blind C has been expanded to include additional area to the west. You can hunt the area at the end of the road you walk in on all the way to the blind C stake. We have marked a path to the blind C point using blue reflective tape. Due to the flooded beaver pond, it may be more difficult to retrieve downed waterfowl.

Guide to MCB Quantico Waterfowl Hunting (2024)



QUANTICO CREEK

Quantico Creek borders the northern Mainside portion of MCB Quantico. There are seven stationary blinds located on Quantico Creek (Blinds 5, E, 6, 7, 8, F, HP). Use the ramp that is located at the old Hospital Point (on the other side of Quantico Town) to access the creek. You can also access the creek from the Potomac River. Quantico Creek is a large body of water that flows directly into the Potomac River. The tidal changes will rarely affect your ability to navigate up and down the waterway, but the water does get very shallow in front of the blinds at low tide. The creek has mostly a hard bottom with few obstructions. MCB Quantico abuts the southeastern portion of the creek. The property located on the northern, western, and SW portion of the creek is privately owned. There are several private blinds located on the creek as well as the blinds owned by MCB Quantico. All of the MCB Quantico blinds are on the southern bank between the Railroad Bridge to the SE and the power lines to the NW.



The boat ramp will support large boats at high to mean tide only. There is a dock next to the ramp. The ramp is concrete, has lighting and has a gentle slope. Large amounts of sand often build up on the ramp and can make it difficult to drive off of. The ramp extends about 20 feet into the water from the high water mark (ends between 4th and 5th pier on dock) and then drops off sharply. Be careful when walking around or near the end of the ramp. There is about a 3-foot drop from the edge of the ramp to the bottom. You should also be careful not to back the

wheels of your trailer off the ramp when putting your boat in the water. Tide has little impact on your ability to put in and take out small boats and canoes but can make it very difficult to launch or recover large boats at low tide.

Directions to the Quantico Creek boat ramp: From the Game Check Station you will head east on Russell Road towards I-95. You will pass under I-95 bridge and continue heading toward the back gate of MCB Quantico. After driving through the gate continue heading east on Russell Road. You will pass the Marine Corps Exchange/Commissary complex on your left. As you continue on Russell Road you will pass the MCCDC headquarters building and the Manpower Building. As you pass the Base Chapel you will come to a traffic circle. Enter the circle and take the second right and head toward Quantico Town. Take a right at Potomac Avenue into Quantico Town. Go over the train tracks and head into and through town. At the end of town take the last left on River Road before the marina. You will go about a quarter mile and into the Marine Corps Systems Command campus. Take a left at the sign for the boat ramp. Follow this road around to the right and down the gravel road to the bottom of the hill where the ramp is located.

Blind 5: Blind 5 is the farthest blind from the ramp. It is located approximately 2300 meters west up the creek at grid coordinates 18S 299490, 4268782. Turn northwest (left) from the ramp, go under the railroad bridge, and head up the creek toward the power line. As you head up the creek, watch the shoreline to your left. About 1500 meters up you will see a marshy area set back from the creek. As you pass this area the shoreline will start to turn in and develop into a cove. As the shoreline comes back around a small piece of land with a steep cliff behind it will jut out. The blind is located on the point of land about 50 meters west of the cliff. The power lines will be about 300 meters away and there will be a little marshy area just to the NW of you. Do not cross under the power lines and continue up the creek as MCB Quantico ends at the power lines. The blinds beyond the power lines are privately owned. The bottom to the left is shallower and the footing is fair but uneven. The footing in front of and to the right is fair and uneven and slopes off gently. Rebuilt blind as of 2024.

Blind 5 Alternate Shooting Stake: No alternate shooting stake, hunters may float blind hunt within 100-ft of the blind pending they have a licensed float blind and maintain the 400-meter distance from adjacent blinds.

Blind 6: Blind 6 is located approximately 1500 meters from the ramp on the end of a sandy point of land at grid 18S 300066 4268141. Turn northwest (left) from the ramp and go under the railroad bridge. Head up the creek toward the power line. As you head up the creek watch the shoreline to your left. About 1500 meters up you will see a marshy area set back from the creek. The water level around the blind is fairly shallow to about three feet at high tide. The surface bottom is very soft and difficult to walk on. A lot of aquatic vegetation grows in the water surrounding the blind during the summer. This vegetation dies during the fall, but can make getting into the blind during the early season difficult. Rebuilt blind as of 2024.

Blind 6 Alternate Shooting Stake: No alternate shooting stake, hunters may float blind hunt within 100-ft of the blind pending they have a licensed float blind and maintain the 400-meter distance from adjacent blinds.

Blind 7: Blind 7 is located approximately 1030 meters from the ramp on a point of land at grid 18S 300147 4267819. Turn northwest (left) from the ramp and go under the Railroad Bridge. Head up the creek towards the power line. As you head up the creek watch the shoreline to your left. After passing under the bridge, you will come upon a point of land where Blind 8 is located. Go around the point of land and stay near the southern (left side) shoreline. The water level around Blind 7 is fairly shallow and there is a hard surface bottom with some underwater obstructions. Rebuilt blind as of 2024.

Blind 7 Alternate Shooting Stake: The old blind 7 is located inside the cove to the west of the New Blind 7. Hunters may hunt from the old blind or float blind hunt anywhere between the new or old blind pending they have a licensed float blind and maintain the 400-meter distance from adjacent blinds.

Blind 8: Blind 8 is located approximately 550 meters from the ramp on a point of land that sticks out into the creek. The grid coordinates are 18S 300386, 4267322. Turn northwest (left) from the ramp and go under the Railroad Bridge. Head up the creek toward the power line. As soon as you pass under the bridge you will see a marshy point of land that sticks out from the left shoreline. It is only about 450 meters from the bridge. Blind 8 is located on the eastern tip. The blind sits in the open but is surrounded by a large amount of shore vegetation. The water level is shallow around the blind but drops off quickly as you move out into the open water. The surface around the blind is fairly soft. Rebuilt blind as of 2024.

Blind 8 Alternate Shooting Stake: As you look out from the blind, the stake is located 150 meters to the left, along the shoreline, which goes to the point and continues west ending up behind the blind on the other side of the point of land. It is marked with reflective tape. The bottom is soft and uneven.

Blind E: Blind E is located approximately 2000 meters from the ramp between Blind 6 and Blind 5 at grid 18S 299743, 4268372. Turn northwest (left) from the ramp and go under the Railroad Bridge. Head up the creek toward the power line. About 1500 meters up you will see a marshy area set back from the creek (Blind 6 area). As you pass this area the shoreline will start to turn in and develop a cove. Blind E is located within this cove. The water level is very shallow around the blind and may only be under water during high tide. The water in front of the blind is two to four feet deep with good footing and some obstructions.

Blind E: No alternate shooting stake, hunters may float blind hunt within 100-ft of the blind pending they have a licensed float blind and maintain the 400-meter distance from adjacent blinds.

Blind F: Blind F is located approximately 300 meters from the ramp between Blind 8 and the railroad bridge crossing the creek at grid 18S 300500 4266936. Turn northwest (left) from the ramp and go under the railroad bridge. Immediately after passing the railroad bridge look to your left and you will see an area set back from the main creek. Blind F is in this area approximately 185 meters west after passing under the railroad bridge. From about 50 yards out from the blind, the water becomes quite shallow. Through late summer and early fall the blind

has upwards of 90% submerged vegetation cover in the surrounding area. Such depth and vegetation may make it difficult to access the blind under power. The bottom is firm and sandy but becomes softer further from the blind. Rebuilt blind as of 2024.

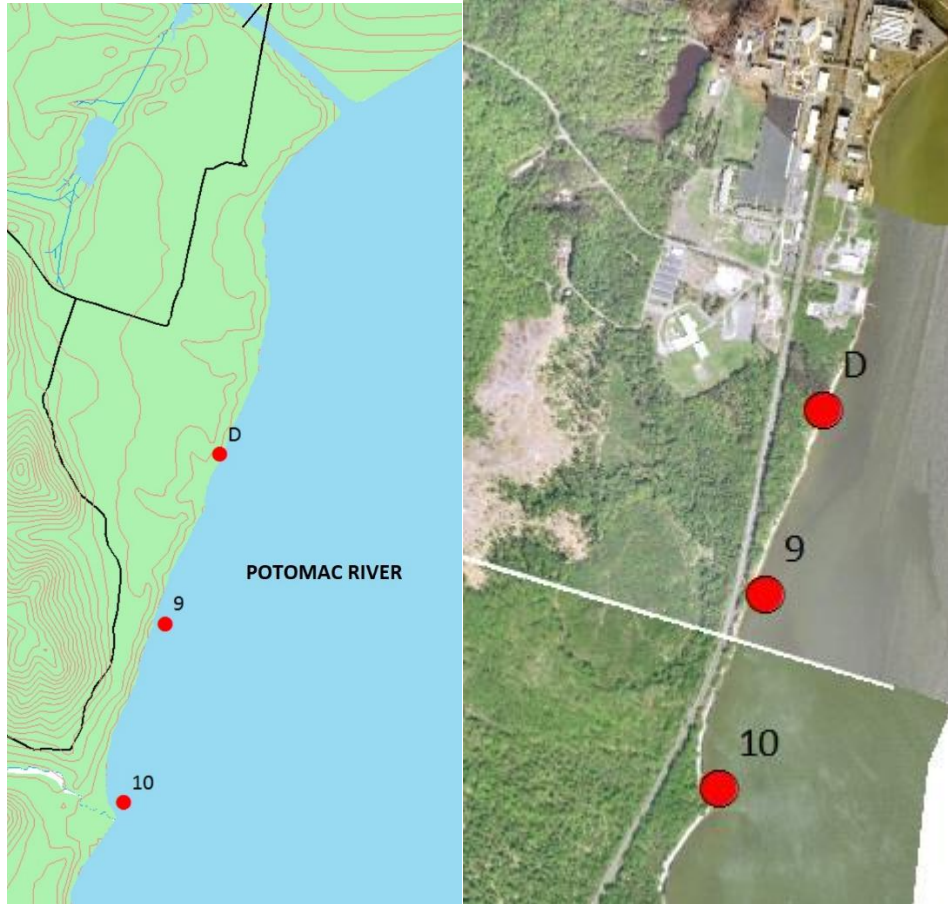
Blind F Alternate Shooting Stake: There is no alternate shooting stake for Blind F.

Hospital Point Blind: The Hospital Point blind is located approximately 240 meters from the boat ramp as you head toward the Potomac River at grid 18S 300915, 4266845. Turn right from the ramp and head southeast toward the mouth of Quantico Creek. As you approach the river there will be a point on your right. The blind is located on the shoreline immediately before the point. Alternatively, this blind can be accessed via land along the shoreline. If traveling by foot, make sure you have a method of game retrieval. From the boat ramp, turn right and head southeast toward the mouth of the creek, following the shoreline. The blind is approximately the same distance via the shoreline route.

Note: The water surrounding the blind has a large amount of concrete and rebar refuse. Exercise caution when approaching the blind via boat or when retrieving downed game.

Hospital Point Blind Alternate Shooting Stake: The stake is located approximately 50 meters to the right on the point of land. The footing is hard but uneven with obstructions. If hunting from a floating blind, exercise caution that you do not get further than 100 feet from the stake as you could end up in Maryland waters and subject to Maryland state hunting regulations.

POTOMAC RIVER



There are three stationary blinds located on the Potomac River (D, 9 & 10). Due to the new MCAF restricted zones (See Map on P-20) these blinds can only be accessed from the Quantico Creek boat ramp by boat. From the Game Check Station you will head east on Russell Road towards I-95. You will pass under I-95 bridge and continue heading toward the back gate of MCB Quantico. After driving through the gate continue heading east on Russell Road. You will pass the Marine Corps Exchange/Commissary complex on your left. As you continue on Russell Road you will pass the MCCDC headquarters building and the Manpower Building. As you pass the Base Chapel you will come to a traffic circle. Enter the circle and take the second right and head toward Quantico Town. Take a right at Potomac Avenue. Go over the train tracks and head into and through Quantico town. At the end of town take the last left on River Road before the marina. You will go about a quarter mile and into the Marine Corps Systems Command campus. Take a left at the sign for the boat ramp. Follow this road around to the right and down the gravel road to the bottom of the hill, arriving at the boat ramp. The blinds are located on the southern edge of MCB Quantico property.

The river bottom is a hard surface with a gentle slope. The water depth can vary depending on the tide from fairly deep to fairly shallow. The blinds are located on the beach, butted up against the embankment. The water on the river can get very rough during windy or stormy conditions.

Guide to MCB Quantico Waterfowl Hunting (2024)

During such conditions, make sure you have a boat of sufficient size and power to safely navigate to the blinds. At different times of the seasons there may be crab traps marked with buoys on the river. Watch for these, especially during darkness. There are no alternate shooting stakes for the Potomac River blinds.

Blind D: Blind D is located on the river south of OCS at grid coordinates 18S 298344, 4262530. It is approximately 3 miles from the ramp to the blind. You can access Blind D by boating from the Hospital Point Boat Ramp. From the ramp, head east out into the Potomac River. Head south abeam the point of land when in the river. Motor past the marina, on the outside perimeter of Chopawamsic Island, and past the Air Facility (see restriction zone details). Following the shoreline, you will pass the Fire Station and the MCBQ Recycling Center; these areas may be well lit. Finally, there is a dock and boat ramp owned by the base that is not for our use. Once past this, start looking for the blind, approximately another 360 meters.

There are no major land features associated with Blind D. It sits on the beach along the shore and has heavy vegetation behind it. There is a large upturned tree stump that sits on the shore 5 meters south (downstream) of the blind. The water level in front of the blind will vary with the tide. A strong sustained west or south wind can move the waterline 10 to 20 meters from the blind. There is a hard surface bottom generally free of obstructions with a gentle slope. Blind D can be difficult to find in low light or foggy conditions.

Blind 9: Blind 9 is located on the river south of OCS at grid 18S 298170, 4262050. It is approximately 3 miles from the ramp to the blind. You can access Blind 9 by boating from the Hospital Point Boat Ramp. From the ramp head east out into the Potomac River. Head south abeam the point of land when in the river. Motor past the base marina, on the outside perimeter of Chopawamsic Island, and past the Air Facility (see restriction zone details). Following the shoreline, you will pass the Fire Station and the MCBQ Recycling Center; these areas may be well lit. Finally, there is a dock and boat ramp owned by the base that is not for our use. Once past this, start looking for the blind. You should encounter Blind D first, continue on to find Blind 9.

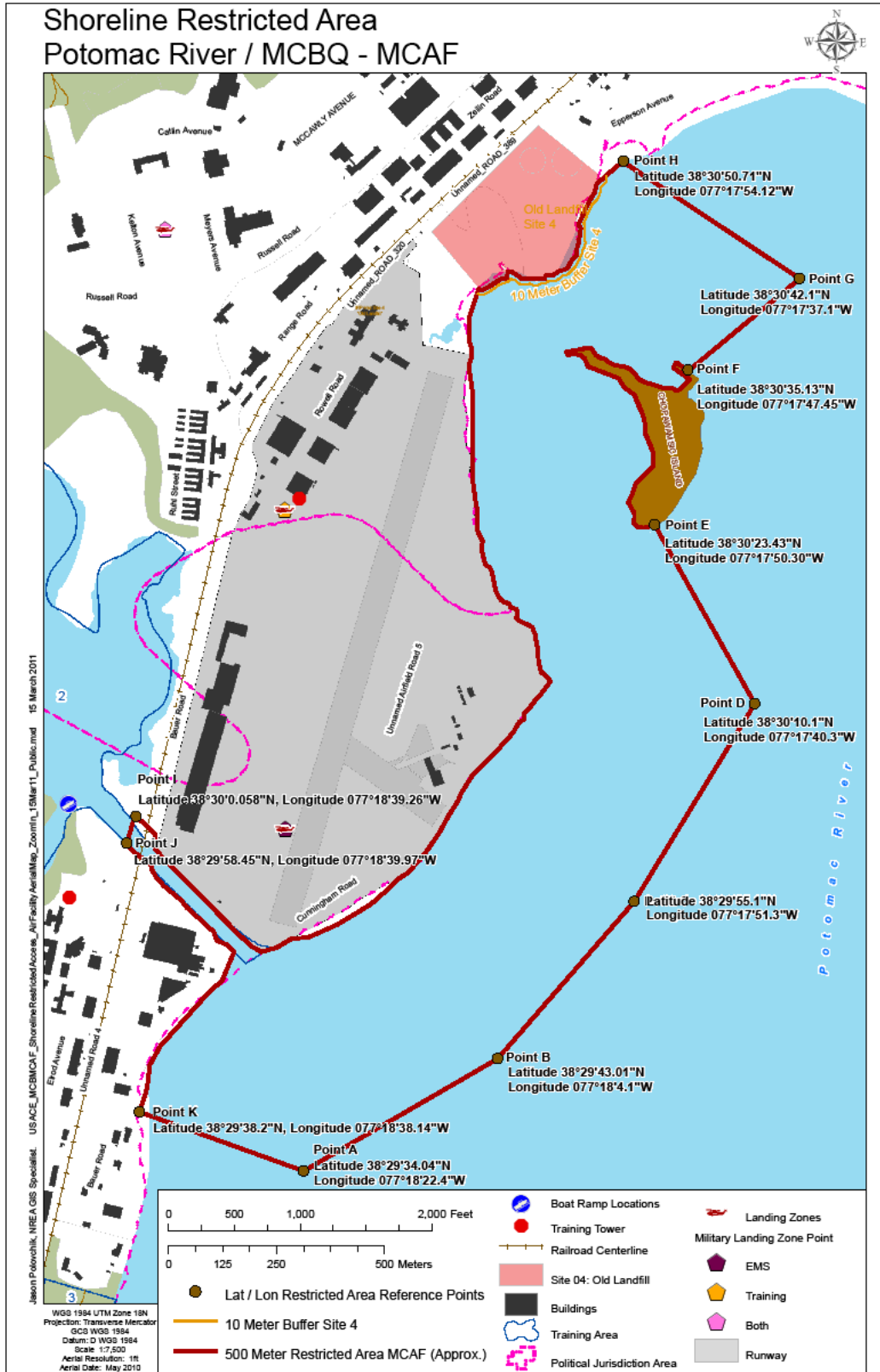
There are no major land features associated with Blind 9. It sits on the edge of the water line with the embankment directly behind it. The blind sits out of the water on a sandy beach. The water level in front of the blind will vary with the tide. There is a hard surface bottom generally free of obstructions with a gentle slope. Blind 9 can be difficult to find in low light or foggy conditions.

Blind 10: Blind 10 is located on the river south of OCS at grid 18S 298032, 4261544. It is approximately 3 miles from the ramp to the blind. You can access Blind 10 by boating from the Hospital Point Boat Ramp. From the ramp head east out into the Potomac River. Head south abeam the point of land when in the river. Motor past the marina, on the outside perimeter of Chopawamsic Island, and past the Air Facility (see restriction zone details). Following the shoreline, you will pass the Fire Station and the MCBQ Recycling Center; these areas may be well lit. Finally, there is a dock and boat ramp owned by the base that is not for our use. Once past this, start looking for and Blind D and Blind 9. There are no major land features associated with Blind 10 (Blind 10 is about 500 meters south of Blind 9). Blind 10 is next to private

Guide to MCB Quantico Waterfowl Hunting (2024)

property, and there is a private blind located roughly 150 meters south. There are submerged pylons just to the south of the blind. These pylons run from the shoreline out into the water. Use caution when operating your boat around the blind to avoid hitting the pylons

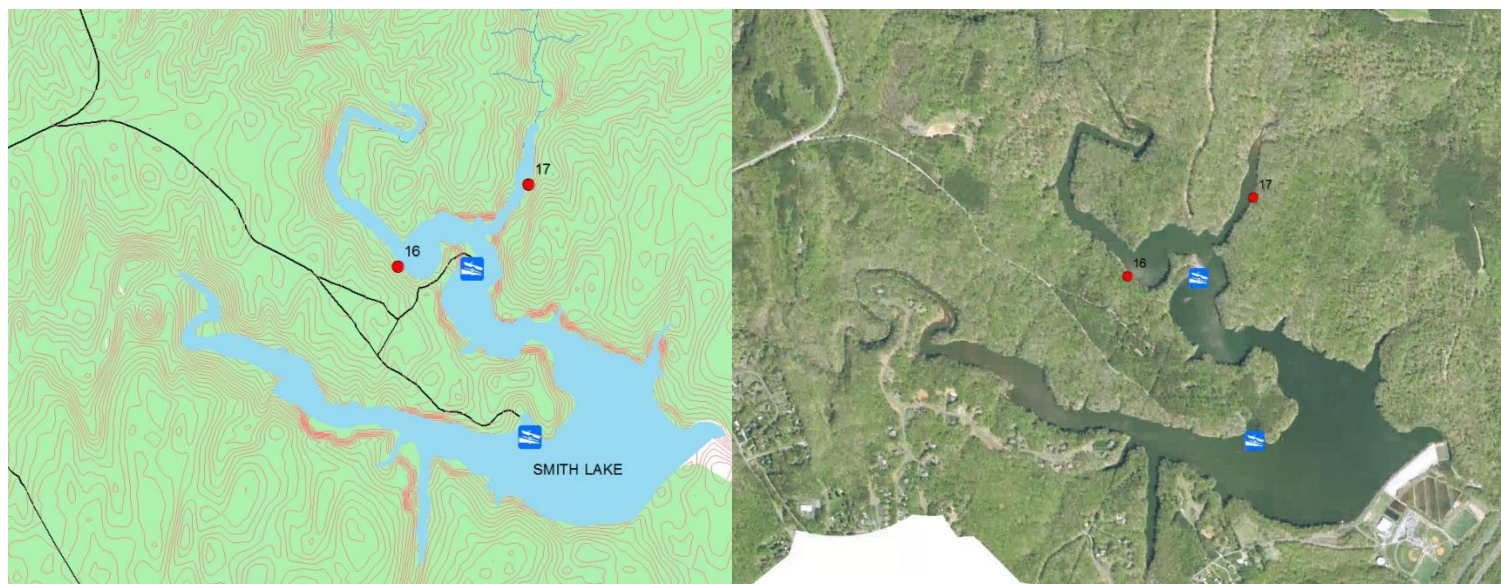
The blind sits on the edge of the water line on a sandy beach with an embankment directly behind it. To the right the sloping shoreline is heavily graveled. The water level in front of the blind will vary with the tide. There is a hard surface bottom with a gentle slope. Blind 10 can be difficult to find in low light or foggy conditions.



SMITH LAKE

There are two blind stakes located on Smith Lake (also known as Aquia Reservoir): **Blind 16 Stake and Blind 17 Stake**. Smith Lake is located on the west Side of I-95. Smith Lake has a restriction on boats: no gasoline engines are allowed on the lake. You must use either an electric motor or hand-paddled boat. Smith Lake is a man-made reservoir and provides water to Stafford County. It is a deep lake with very steep sides. Use extreme caution when walking on the banks and in the water, as there are numerous drops, obstructions, and slippery banks. There are two boat launches. One is on the northwest fork (Beaverdam Run side) and the other on the southwest fork (Aquia Creek side). Both blind locations are on the north bank of the lake and are best accessed from the northwest boat launch. These directions are to their current locations. There are no alternate shooting stakes for these locations. Both of these locations themselves are Blind Stakes. As such you must hunt follow the **Waterfowl Blind 100-ft Rule** mentioned earlier in this guide when hunting these locations.

Directions to Smith Lake: From the Game Check Station head west along MCB-1 until you come to the firehouse. Turn left at the firehouse onto MCB-2. Two miles down MCB-2 you will come to Smith Lake Road on your left. Smith Lake Road is a graveled road surface and only one car wide. If you enter into Camp Barrett, you have gone too far and need to turn around and head back. About a mile down Smith Lake Road, you will come to a split with signs directing you to Smith Lake boat launches. To get to the blinds, stay to your left and keep left to go to the northwest launch. Follow the road into the parking area and the ramp will be on your right.

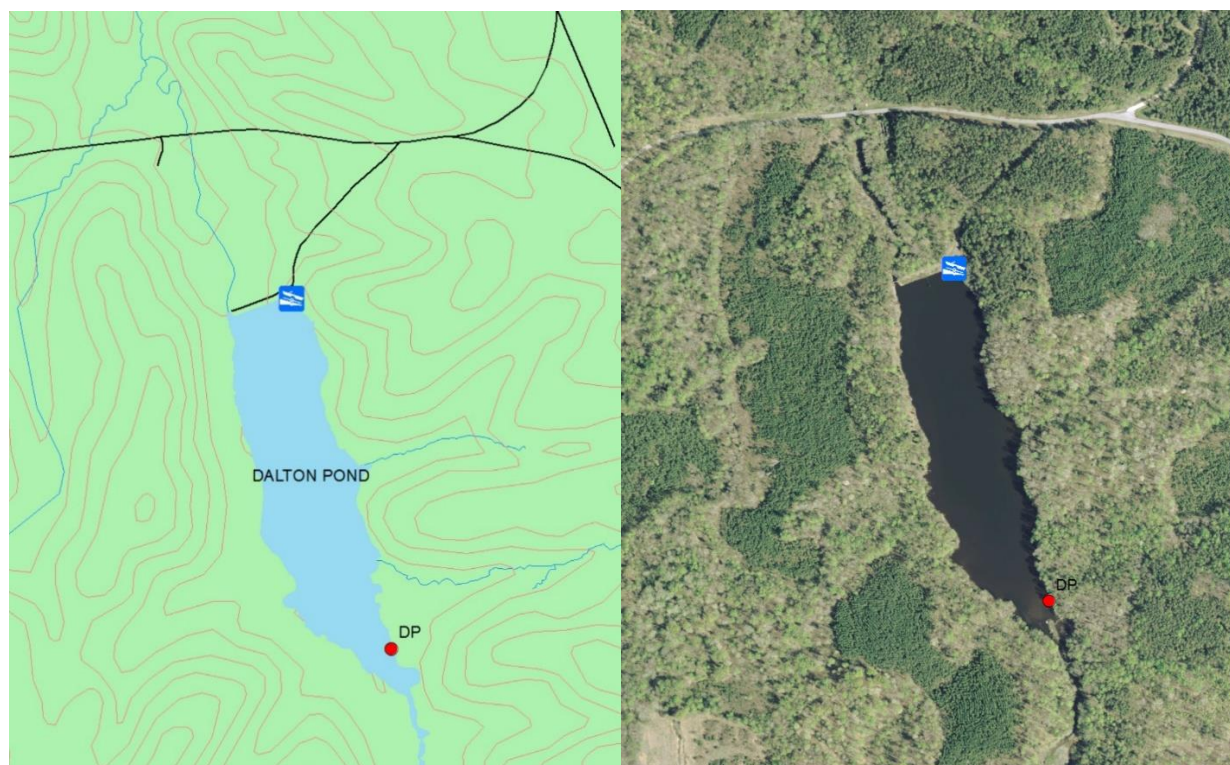


Blind 16 Stake: From the ramp, follow the shoreline around to the left. The lake will split with a major fork to the left or northwest and a minor fork to the right or northeast. Keep following the shoreline around to the left. Head upstream to where it narrows significantly. The fork will run north and then curve to the south before it curves back to the northwest. The blind stake is located past this bend. Blind stake coordinates are 18S 289718, 4263514.

Blind 17 Stake: From the ramp follow the shoreline around to the left. The lake will split with a major fork to the left or northwest and a minor fork to the right or northeast. Follow the fork to the right that runs along the Training Area 5A-5B boundary until you come to the end. The blind stake is located in the small marshy area. Blind stake coordinates are 18S 290284, 4263841.

DALTON POND

Dalton Pond is located in TA-13 on the west side of base. The physical blind is currently in disrepair. At this point, hunters are allowed to utilize the unkempt blind as a blind stake. As such you must hunt follow the **Waterfowl Blind 100-ft Rule** mentioned earlier in this guide when hunting this location. It is important to note that the training area is not required to be open to general hunting in order to use this blind. Accessing the pond by vehicle will require consideration of the daily gate schedule posted at the Game Check Station as there are multiple routes to the pond, some of which may be closed at any given time. No gasoline motors are allowed on Dalton Pond. To access the blind, head south from the boat ramp toward the far side of the pond. The blind will be on the western (right) shoreline approximately 550 meters from the boat launch. The blind coordinates are 18S 276971, 4271769. Facing the boat ramp, head west along the dam road, cross the wooden bridge and take a left (heading south) until you reach the blind (approximately 400 yards). Note, however, that you are still required to have a way to retrieve your downed game. The pond itself is of moderate depth around the edges with depth ranging from 1 to 10 feet. Down the middle of the pond is a somewhat deeper channel. Submerged vegetation can be heavy at times and there are a significant number of submerged pine trees throughout the lake. Please consider both of these things as you approach and subsequently utilize the stake blind.



Directions to Dalton Pond:

Via MCB-1/MCB-4/MCB-3:

From the Game Check Station head west on MCB-1. Continue straight ahead at the intersection of MCB-1 and MCB-4 to continue on to MCB-4. Continue past Lunga Park and you will come to the intersection of MCB-4 and MCB-3. Turn right. Stay straight on MCB-3 for about 7 miles. The entrance to the Dalton Pond area will be on your left hand side.

Via MCB-1/MCB-6/MCB-3:

From the Game Check Station head west on MCB-1. One half mile past the fire station, make a hard right turn to stay on MCB-1. Continue on MCB-1 for 7.6 miles to turn left on MCB-6. Stay straight on MCB-6 until you can go no farther. Turn right. Dalton Pond will be on your left in 1.6 miles.

Via MCB-1/MCB-8/Tokyo Rd./MCB-3:

From the Game Check Station head west on MCB-1. One half mile past the fire station, make a hard right turn to stay on MCB-1. Continue on MCB-1 for 9.7 miles to turn left on MCB-8. Follow MCB-8 for 1.7 miles to turn left on Tokyo Road. Continue on Tokyo Road until it intersects with MCB-3. Turn right. Dalton Pond will be on your left in 0.4 miles.